

S.O.R.G.

### Registration and Information:

S.O.R.G. Secretary's office  
Mr Oliver Scheunemann  
Secretary Mrs Kerstin Braun  
c/o Gebrüder Martin GmbH & Co. KG  
Ludwigstaler Str. 132  
D-78532 Tuttlingen

Tel.: +49 (0) 7461 706-216  
Fax: +49 (0) 7461 706-350  
E-Mail: [sorg@martin-med.com](mailto:sorg@martin-med.com)

[www.sorg-group.com](http://www.sorg-group.com)

### Participant Fee:

(incl. individual PC, meal and beverages)  
EUR 250,-

Payable in advance by Eurocheque or bank transfer.

Bank: Kreissparkasse Tuttlingen  
Account No.: 10234  
Bank Code: 643 500 70  
IBAN DE 15 6435 0070 0000 0102 34  
BIC SOLADE 51 TUT

Please indicate: Erlangen - December 2005

Limited to 20 Participants

**KLS** martin  
GROUP

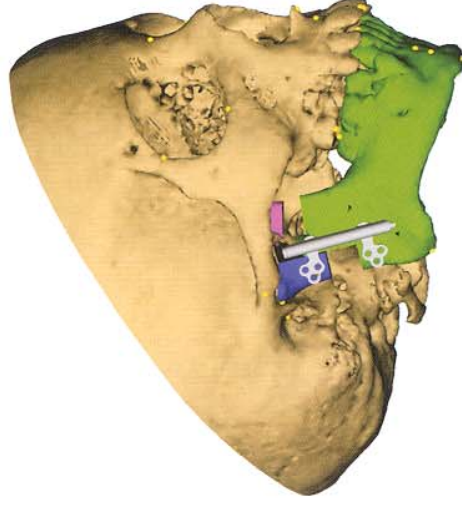


Gebrüder Martin GmbH & Co. KG  
A Company of the KLS Martin Group  
Ludwigstaler Straße 132 · D-78532 Tuttlingen/Germany  
Phone +49 7461 706-0 · Fax +49 7461 706-193  
[info@klsmartin.com](mailto:info@klsmartin.com) · [www.martin-med.com](http://www.martin-med.com)

S.O.R.G.

## Masterclass Workshop

### Virtual 3-D Planning of Craniofacial Distraction Osteogenesis



**Saturday, December 03, 2005  
Erlangen, Germany**

This workshop will be held in cooperation  
with

Klinik und Poliklinik für Mund-, Kiefer-,  
Gesichtschirurgie der Friedrich-Alexander-  
Universität Erlangen-Nürnberg  
(Dir.: Prof. Dr. F. W. Neukam)

**Location:**

Hörsaal II der Zahnklinik  
Glückstraße 11  
91054 Erlangen

**Organization Committee**

P. Kessler, Erlangen, Germany  
O. Scheunemann, Tuttingen, Germany  
G. Swennen, Bruxelles, Belgium



**Literature:**

Swennen GRJ, Schutyser F, Hausamen JE.  
Three-dimensional Cephalometry  
A color atlas and manual. Springer Verlag,  
Heidelberg, 2005

**Homepage:**

[www.sorg-group.com](http://www.sorg-group.com)

## Programme

### Saturday, December 03, 2005

09.00 – 09.05

**Opening**

09.05 – 09.30

3-D virtual scene approach / 3-D cephalometric reference system

09.30 – 10.30

Hands-on (Part I)

10.30 – 11.00

**Coffee break**

11.00 – 12.00

3-D cephalometric analysis of hard and soft tissues

12.00 – 13.00

Hands-on (Part II)

13.00 – 14.00

**Lunch**

14.00 – 14.30

Virtual craniofacial osteotomies  
mandible: body, ramus, gonial angle, reverse-L  
midface: Le Fort I, II, III, segmental  
and positioning of virtual distraction devices  
internal, external / mono-, bi-, tri-directional

14.30 – 15.30

Hands-on (Part III)

15.30 – 15.45

**Coffee break**

15.45 – 16.15

Transfer of virtual planning into the operation theatre

16.15 – 16.30

Pitfalls and how to avoid them

16.30 – 17.30

Hands-on (Part IV)

17.30 – 17.45

**Discussion**

**Cocktail**



3D OPTIMIZED MAXILLOFACIAL SURGERY

[www.medicim.com/3Dcephalometry.html](http://www.medicim.com/3Dcephalometry.html)