

Registration and Information:**Secretary**

Dr. Gin-Ah Song / Prof. Dr. Myung-Jin Kim
c/o Department of Oral and Maxillofacial
Surgery,
Seoul National University Dental Hospital,
275-1 Yeongeon-dong, Jongno-gu,
Seoul 110-768, Korea

Tel.: +82 (2) 2072-3813

Fax.: +82 (2) 766-4948

E-Mail: guessandimage@hanmail.net
myungkim@snu.ac.kr

Participant Fee

Lecture Course (morning session): free
Hands-on workshop (afternoon session):
50,000 Won

limited to 30 participants on hands-on course

Location

The Republic of Korean Air Force (ROKAF)
Welfare center,
Daebang-dong, Dongjack-gu, Seoul, Korea

Tel.: +82 (2) 810-6080

www.airforce.mil.kr/index.html



KLS martin
GROUP

The Art of
Distraction Osteogenesis



Gebrüder Martin GmbH & Co. KG

A company of the KLS Martin Group
Ludwigstaler Straße 132 · D-78532 Tuttlingen/Germany
Phone +49 7461 706-0 · Fax +49 7461 706-193
info@klsmartin.com · www.klsmartin.com

S.O.R.G.
Asian and Pacific Section

**DISTRACTION OSTEOGENESIS
(DOG)**

**BASIC SEMINAR AND HANDS-ON
WORKSHOP IN SEOUL**

In conjunction with

**The 45th Congress of The Korean Association
of Maxillofacial Plastic and Reconstructive
Surgeons (KAMPRS)**



**Friday, October 27th, 2006,
Seoul, Korea**

Organizing Committee and Speakers:

T. Takahashi (Fukuoka, Japan)
(S.O.R.G. Asian and Pacific Section-Chairman)

M-J Kim (Seoul, Korea)
(Seoul SORG Workshop Chairman)

M. Mitsugi (Kagawa, Japan)

P. Kessler (Erlangen, Germany)
O. Scheunemann (Tuttlingen, Germany)
J-R Kim (Pusan, Korea)
J-H Lee (Seoul, Korea)
S-K Kim (Kwangju, Korea)
J-Y Paeng (Seoul, Korea)

Hands-On Course



Topic:

Craniomaxillofacial and Dento-alveolar DOG

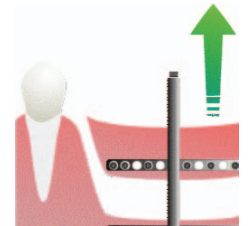
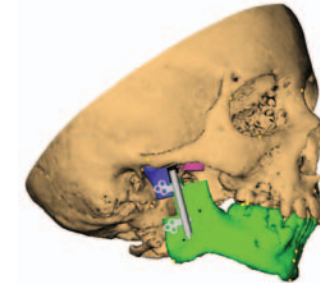
Comparison between Conventional Osteotomy or Bone Grafting Technique and DOG

Program (Final)

Friday, October 27th, 2006

Morning Session**Keynote Speech & Symposium**

- 08:50 – 09:00 **Opening/Welcome Remarks**
- 09:00 – 09:40 Maxillary osteotomy vs Mx DOG
- 09:40 – 10:20 Repair of Cleft alveolus:
Bone grafting vs DOG
- 10:20 – 10:40 **Coffee Break**
- 10:40 – 11:20 **Keynote Speech**
(P. Kessler, Erlangen Germany)
Indication for osteodistraction procedures in the mandible
- 11:20 – 11:50 Alveolar augmentation:
Bone grafting vs Alveolar DOG
- 11:50 – 12:20 Maxillomandibular reconstruction:
Bone grafting vs Transport DOG
- 12:20 – 13:30 **Lunch**

**Afternoon Session****Limited Attendance Hands-On Workshop**

- 13:30 – 14:30 **Lecture Techniques for:**
1. Intraoral mandibular distraction
 2. Maxillary distraction
 3. Alveolar distraction
 4. A review of user complaints
- 14:30 – 15:00 Discussion
- 15:00 – 17:00 **Hands-On Surgery with RP Model**
1. Intraoral mandibular distraction
 2. Maxillary distraction
 3. Alveolar distraction
- 17:00 End of Course