



North American  
**S.O.R.G.** ACADEMY

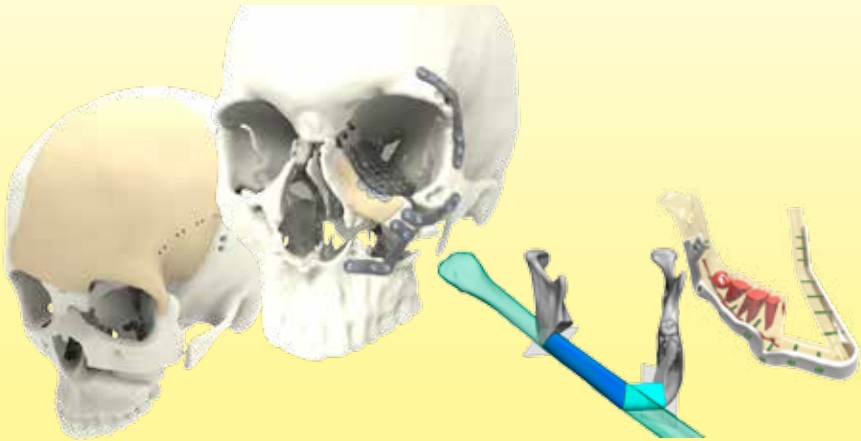
**MasterCourse**

# Customized Facial Implants and 3-Dimensional Surgical Planning:

How to Incorporate State of the Art Technology into  
the Care of the Craniomaxillofacial Surgical Patient

**Chicago, IL**

**April 22-23, 2017**



A Continuing Medical Education Activity Jointly Provided by



and



## **SORG MasterCourse**

# **3D Planning and Implants for the Individual Patient**



### **History:**

In 1989, twenty surgeons came together in Strasbourg to study and promote the use of rigid fixation techniques. The organization they formed became known as the Strasbourg Osteosynthesis Research Group, or SORG. The society has grown internationally, and in 2007, the North American SORG was founded.

### **Goals:**

- Strengthen the discipline of surgery through education and research.
- Provide educational content that meets the needs of the training program, resident, and private practitioner.
- Facilitate relationships between teaching programs, private practitioners, sub-specialty experts, and technical experts to improve patient care.

## North American SORG Academy Events:

The SORG's educational goals in North America are met with three types of events.



Modular Courses are held every six months and act as an advanced update on all subspecialty areas of maxillofacial surgery in four sixteen hour courses.



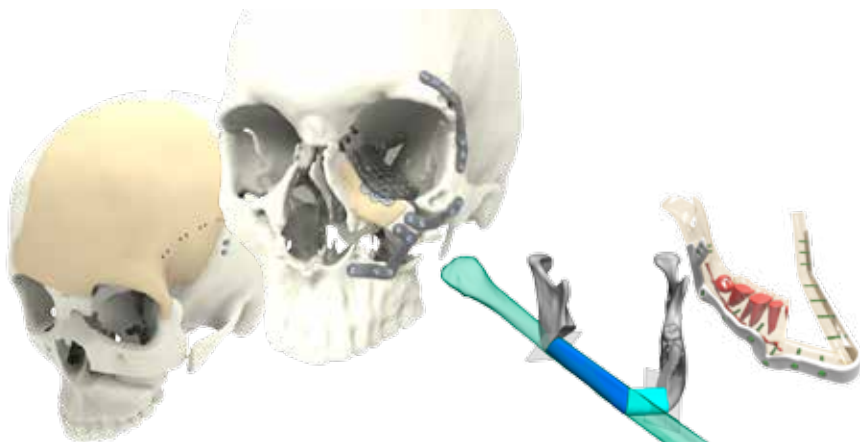
Meet the Expert events are held in local areas to strengthen the knowledge of residents and area maxillofacial surgeons. An expert speaker is chosen by the chairman and local SORG faculty or residency program leadership. Content varies, but is often updates on subspecialty topics and new technologies.



MasterCourses are advanced level courses. They offer experts within a subspecialty area of maxillofacial surgery to improve understanding and discuss new technologies and techniques.

## SORG MasterCourse

# 3D Planning and Implants for the Individual Patient



### **Purpose:**

The integration of research evidence and clinical expertise is improving the standard of care for orthognathic surgery, facial trauma, head and neck reconstruction and correction of facial deformities. Currently, surgeons are relying on experience of anatomical structures, patient images, dental impressions and mechanical measurements to restore bony symmetry and function of the bony structures. Rather than visually analyzing CT images, newer technologies allow the maxillofacial surgeon to plan and execute surgical steps with efficiency and improved outcomes. Computer based planning and simulation, along with three dimensional design capabilities, provides greater precision and customization for patients. Faculty will address the perioperative aspects of managing the CMF patient, including clinical algorithms and the appropriate use of advanced software and technologies.

### **Target Audience:**

Craniomaxillofacial surgeons seeking to improve care choices and augment surgical skills by incorporating advanced technologies in 3D planning and implant customization.

## **Professional Practice Gap:**

Surgeons may be relying on traditional CT imaging for surgical planning, when instead, computer based treatment planning and customized implants can improve patient outcomes.

## **Learning Needs:**

Surgeons require knowledge regarding the application of computer assisted planning and surgery, and considerations for selecting customized implants. They also require strategies and skills to appropriately use navigation tools and 3D software.

## **Objectives:**

Upon completion of the activity, surgeons should be able to:

- Discuss clinical evidence for the integration of computer assisted planning and navigation in craniomaxillofacial surgery.
- Compare the technical considerations and effectiveness of stock implants versus custom fabricated devices for various maxillofacial pathologies.
- Demonstrate the steps involved in computer assisted preoperative planning, and intraoperative navigation and repair for the cranium, orbit, midface and mandible.
- Describe how 3D planning and customized implants can improve patient outcomes, as well as cost efficiency.

## SORG MasterCourse

# 3D Planning and Implants for the Individual Patient

### Course Director

**David B. Powers, MD, DMD, FACS, FRCS (Ed)**

Director  
Craniomaxillofacial Trauma Program  
Associate Professor of Surgery  
Division of Plastic, Reconstructive,  
Maxillofacial and Oral Surgery  
Duke University Medical Center

**Trauma Section Chair**  
**SORG North America**



### Faculty

**Tirbod Fattahi, MD, DDS, FACS**

Chair and Associate Professor  
Facial Aesthetic Surgery  
Department of Oral and Maxillofacial Surgery  
University of Florida Health Science Center, Jacksonville



**Rui Fernandes, MD, DMD, FACS**

Associate Professor  
Department of OMFS, Division of Head and Neck Surgery  
Associate Chair  
Department of Oral and Maxillofacial Surgery  
Chief  
Division of Head and Neck Surgery  
Program Director  
Head and Neck Oncologic Surgery and Microvascular  
Fellowship  
University of Florida College of Medicine, Jacksonville



## Faculty

### **Nils-Claudius Gellrich, MD, DMD**

Professor and Chairman  
Department of Oral and Maxillofacial Surgery  
Hannover Medical School



### **Michael P. Grant, MD, PhD, FACS**

Paul N. Manson Distinguished Professor of Plastic & Reconstructive Surgery  
Chief; Plastic, Reconstructive & Maxillofacial Surgery  
Professor of Surgery, Program in Trauma  
R Adams Cowley Shock Trauma Center  
University of Maryland Medical Center  
Baltimore, MD USA



### **Majeed Rana, MD, DMD**

Assistant Professor  
Oral and Maxillofacial Surgery  
Aesthetic surgery  
Department of Oral and Maxillofacial surgery  
Hannover Medical School



### **Alexander Schramm, MD, DDS**

Chair and Professor  
Department of Oral and Maxillofacial Surgery  
University of Ulm  
Department of Oral and Plastic Maxillofacial Surgery  
Military Hospital Ulm



### **E. Bradly Strong, MD**

Professor & Vice Chair  
Computer Modeling, Facial Trauma and Sinus  
Department of Otolaryngology  
Division of Head and Neck Surgery  
UC Davis Health System



*All faculty participating in continuing medical education activities provided by Pfiedler Enterprises are expected to disclose to the audience any real or apparent financial relationships related to the content of their presentations. Detailed disclosure will appear in writing and be distributed on-site prior to the course, and will also be made verbally during the faculty presentation at the live event.*

# SORG MasterCourse

## 3D Planning and Implants for the Individual Patient

### Program

---

Saturday, April 22, 2017

#### Part 1

|                      |                                                                                                                    |                       |
|----------------------|--------------------------------------------------------------------------------------------------------------------|-----------------------|
| <b>8:50 - 8:50</b>   | <b>Registration &amp; Continental Breakfast</b>                                                                    |                       |
| <b>8:50 - 9:00</b>   | Welcome and Introduction                                                                                           | <i>D. Powers</i>      |
| <b>9:00 - 9:20</b>   | How the Idea of CAS and Customization of Implants Go Together: Development of Custom-made Solutions in CMF Surgery | <i>N.-C. Gellrich</i> |
| <b>9:20 - 9:40</b>   | Every Reconstruction Should Be Custom-Made; Can It Be Reached by Conventional Techniques?                          | <i>R. Fernandes</i>   |
| <b>9:40 - 10:00</b>  | Virtual Planning and Simulation: From Analyzing to Digital Engineering                                             | <i>M. Rana</i>        |
| <b>10:00 - 10:15</b> | Computer Based Treatment Planning and Manufacturing Process - Web Based Training Seminar                           | <i>D. Powers</i>      |
| <b>10:15 - 10:30</b> | Technical Considerations for Implant Manufacturing and Logistics                                                   | <i>M. Rana</i>        |
| <b>10:30 - 10:45</b> | Discussion / Q&A                                                                                                   | <i>N.-C. Gellrich</i> |
| <b>10:45 - 11:00</b> | <b>Coffee Break</b>                                                                                                |                       |

#### Part 2

|                      |                                                                     |                   |
|----------------------|---------------------------------------------------------------------|-------------------|
| <b>11:00 - 11:30</b> | Standard Preformed Versus Customized Implants                       | <i>A. Schramm</i> |
| <b>11:30 - 12:00</b> | Cranial - I T A P C (Indications - Timing - Approaches - Pros Cons) | <i>D. Powers</i>  |
| <b>12:00 - 12:30</b> | Orbit (Primary Repair) - I T A P C                                  | <i>M. Rana</i>    |
| <b>12:30 - 1:00</b>  | Discussion / Q&A                                                    | <i>M. Rana</i>    |
| <b>1:00 - 2:00</b>   | <b>Lunch Break</b>                                                  |                   |

#### Part 3

|                    |                                                                   |                       |
|--------------------|-------------------------------------------------------------------|-----------------------|
| <b>2:00 - 2:30</b> | Orbit (Secondary / Tertiary Repair) - I T A P C                   | <i>M. Grant</i>       |
| <b>2:30 - 3:00</b> | Midface - I T A P C                                               | <i>B. Strong</i>      |
| <b>3:00 - 3:30</b> | Multiple Regions: Cranial and/or Orbit and/or Midface - I T A P C | <i>N.-C. Gellrich</i> |
| <b>3:30 - 4:00</b> | Discussion / Q&A                                                  | <i>M. Grant</i>       |
| <b>4:00 - 4:30</b> | <b>Coffee Break</b>                                               |                       |



## Program

---

### Saturday, April 22, 2017 cont.

| <b>Part 4</b>      |                          |                                 |
|--------------------|--------------------------|---------------------------------|
| <b>4:30 - 5:00</b> | Mandible - ITAPC         | <b>A. Schramm</b>               |
| <b>5:00 - 5:30</b> | Orthognathic - ITAPC     | <b>T. Fattahi &amp; M. Rana</b> |
| <b>5:30 - 6:00</b> | Dental - ITAPC           | <b>N.-C. Gellrich</b>           |
| <b>6:00 - 6:30</b> | Discussion / Q&A         | <b>T. Fattahi</b>               |
| <b>6:30 - 6:35</b> | Summary Day 1            | <b>A. Schramm</b>               |
| <b>6:35</b>        | <b>Group Photograph</b>  |                                 |
| <b>7:00</b>        | <b>Welcome Reception</b> |                                 |

### Sunday, April 23, 2017

| <b>Part 5</b>                       |                                                   |                    |
|-------------------------------------|---------------------------------------------------|--------------------|
| <b>Hands - On Workshop</b>          |                                                   |                    |
| <i>Limited attendance available</i> |                                                   |                    |
| <b>8:00 - 11:00</b>                 | Hands - On Planning and Navigation Workshop       | <b>All Faculty</b> |
| <b>11:00 - 12:00</b>                | Panel Discussion and Conclusions (includes Lunch) | <b>All Faculty</b> |



## **SORG MasterCourse**

# **3D Planning and Implants for the Individual Patient**

### **Course Venue and Accommodations:**

#### **Hilton Suites Chicago Magnificent Mile**

198 E Delaware Pl  
Chicago, Illinois 60611  
United States  
Tel: 312.664.1100

### **Discounted hotel rates for SORG attendees:**

- \$169 (plus tax) per night for a single occupancy room and \$189 (plus tax) for a double occupancy room
- **Discount offer ends Monday, March 13, 2017**
- Special rate only available for April 21st and 22nd
- Must book through Cindy Facklam, 866.986.6440 or [Cindy@elitetravelsvc.com](mailto:Cindy@elitetravelsvc.com), and mention North American SORG when booking to receive the discounted room rate (rates are based on a first-come, first-served basis)

### **Administrative Contact:**

Emily Tasseff  
Administrative Coordinator · SORG, North America  
[etasseff@northamericansorg.org](mailto:etasseff@northamericansorg.org)  
877.ORG.SORG (877.674.7674) · 904.699.9937

### **Registration:**

Online: [www.regonline.com/NASORGMasterCourse2017](http://www.regonline.com/NASORGMasterCourse2017)  
Phone: 1.877.674.7674  
\$495.00

### **Check payment information:**

North American SORG · P.O. Box 54659 · Jacksonville, FL 32245  
Attn: Emily Tasseff  
877.ORG.SORG (877.674.7674) · 904.699.9937 · [info@NorthAmericanSORG.org](mailto:info@NorthAmericanSORG.org)

## **Accreditation and Credit Designation:**

### **Accreditation**

This activity has been planned and implemented in accordance with the accreditation requirements and policies of the Accreditation Council for Continuing Medical Education (ACCME) through the joint providership of Pfiedler Enterprises and the North American Strasbourg Osteosynthesis Research Group (S.O.R.G.). Pfiedler Enterprises is accredited by the ACCME to provide continuing medical education for physicians.

### **Credit Designation**

Pfiedler Enterprises designates this live activity for a maximum of 8 *AMA PRA Category 1 Credits™* for Saturday, April 22, and 11 *AMA PRA Category 1 Credits™* for the two day, April 22 & 23. Surgeons should claim only the credit commensurate with the extent of their participation in the activity.

### **Declaration of Disclosure**

In compliance with the ACCME Standards for Commercial Support, Pfiedler Enterprises provides disclosure and resolution of conflict information for individuals who may control the content of this CME activity.

Please visit our website at: <http://www.pfiedlerenterprises.com/disclosure>.

### **Disclaimer**

Pfiedler Enterprises does not endorse or promote any commercial product that may be discussed in this activity.



Commercial Support and Exhibitor information to follow

# - MODULAR TRAINING SERIES -



## **1** Pathology, Head & Neck Reconstruction

**Spring 2017**

March 3 - 5, 2017 · JW Marriott Buckhead · Atlanta, GA

## **2** Congenital & Developmental Deformities

**Fall 2017**

## **3** Anesthesia, Preprosthetic & Dental Implants

**Spring 2018**

## **4** Trauma, TMJ & & Cosmetic Surgery

**Fall 2018**

[www.sorg-group.com](http://www.sorg-group.com)  
[info@northamericansorg.org](mailto:info@northamericansorg.org)